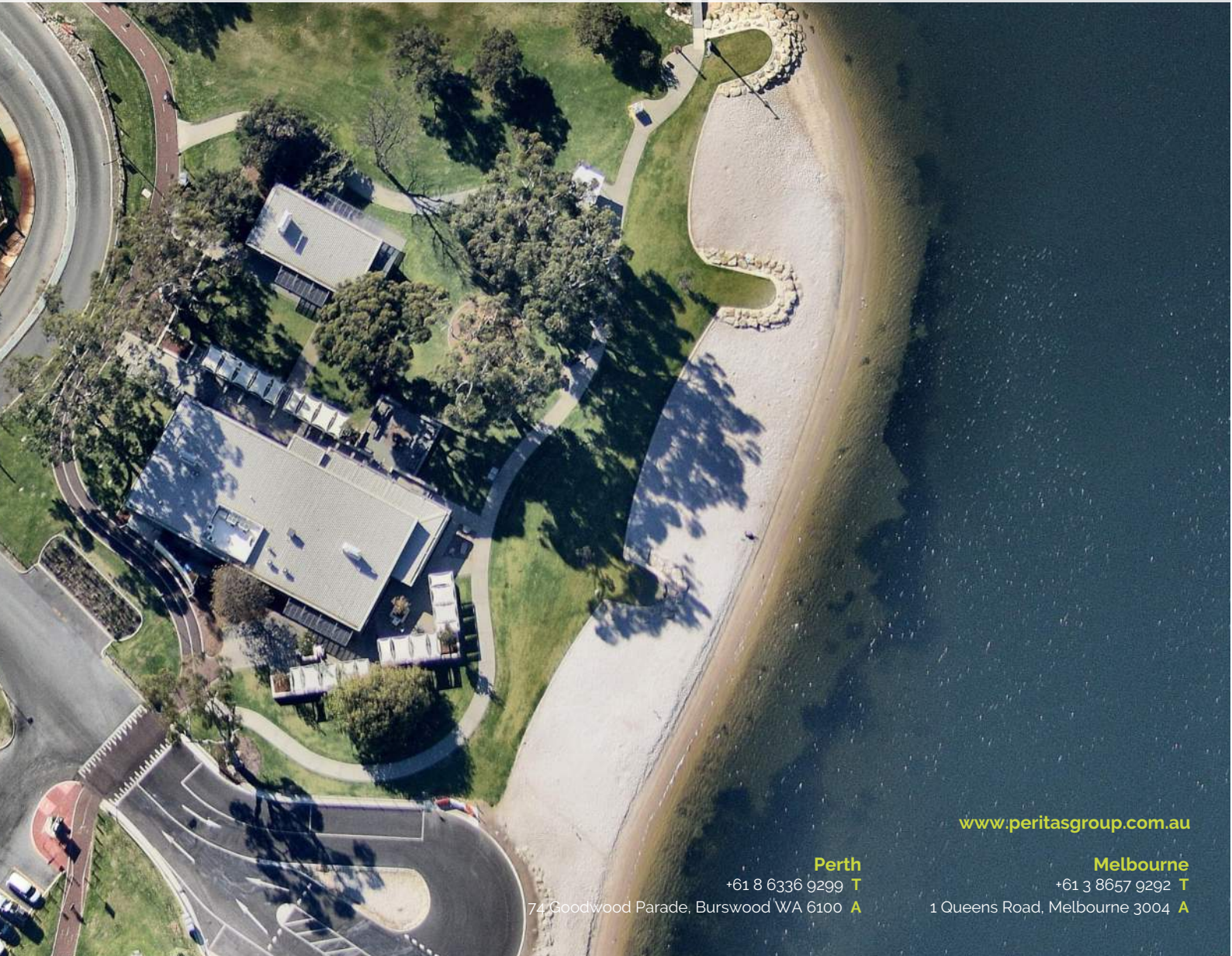




CAPABILITY STATEMENT

COMMERCIAL



www.peritasgroup.com.au

Perth

+61 8 6336 9299 **T**

74 Goodwood Parade, Burswood WA 6100 **A**

Melbourne

+61 3 8657 9292 **T**

1 Queens Road, Melbourne 3004 **A**



SWAN YACHT CLUB, EAST FREMANTLE WA

OVERVIEW

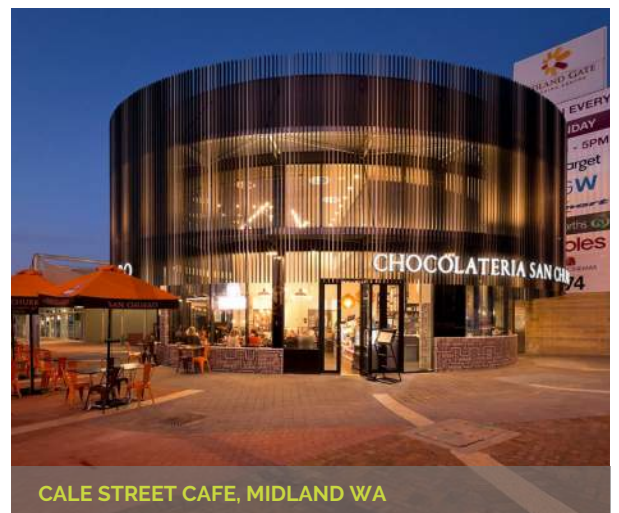
Peritas Group have a long-standing history with commercial projects across Australia. Over the past 10 years we have delivered in excess of 60 projects ranging from \$1- \$60 million in construction value. We back ourselves to be able to deliver high quality detailed engineering solutions across a range of commercial mediums.

RECENT PROJECTS:

- ENCORE APARTMENTS & OFFICES, SUBIACO - \$25M
- POINT FRASER DEVELOPMENT - \$18M
- DAN MURPHY'S & CARINE TAVERN - \$5.8M
- DAN MURPHY'S KWINANA MARKETPLACE
- PMG TOYOTA, WA - \$10M
- ONE SUBSEA OFFICES, WA - \$10M
- JASON MAZDA, OSBORNE PARK, \$10M
- HALE VILLAGE, WATTLE GROVE, WA - \$7M
- JOONDALUP RETAIL TENNANCIES, WA - \$6M
- ACTULASE LASER EYE SURGERY, WA - \$5M
- DOME DEEP WATER POINT, MT PLEASANT - \$5M
- THE ASHBY BAR & BISTRO, WA - \$3.5M
- SWAN YACHT CLUB, FREMANTLE - \$3M
- SCHLUMBERGER OFFICES, JANDAKOT - \$3M
- CALE STREET CAFE, MIDLAND, WA - \$2M
- THE DUKE BAR & BISTRO, WA - \$2M



DOME CAFE, MOUNT PLEASANT WA



CALE STREET CAFE, MIDLAND WA